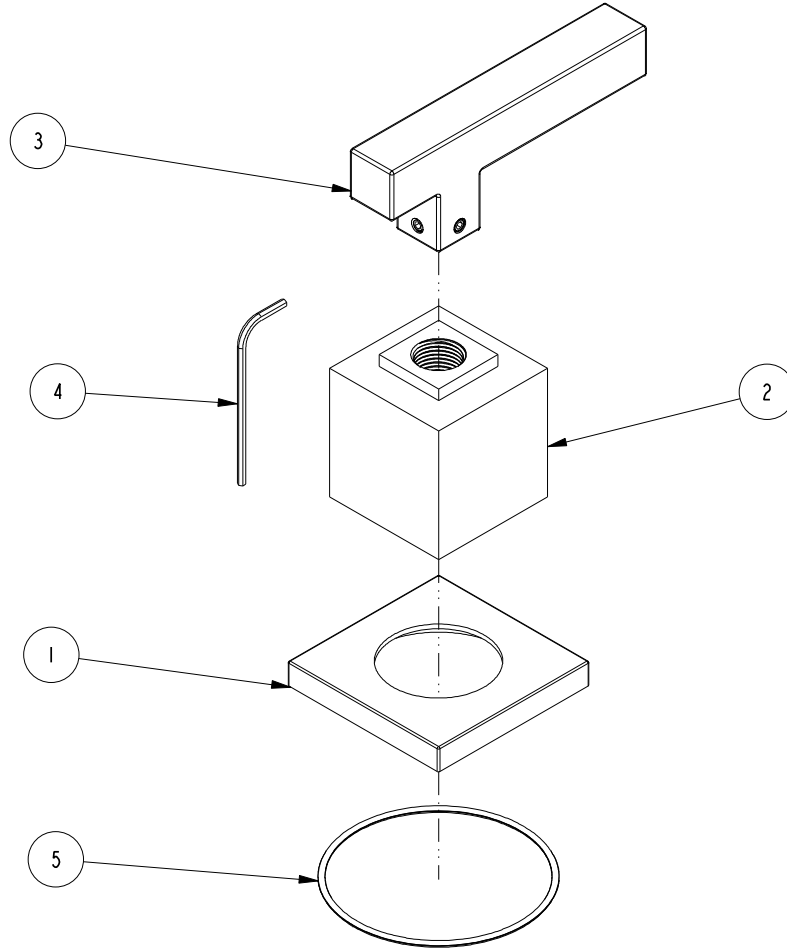


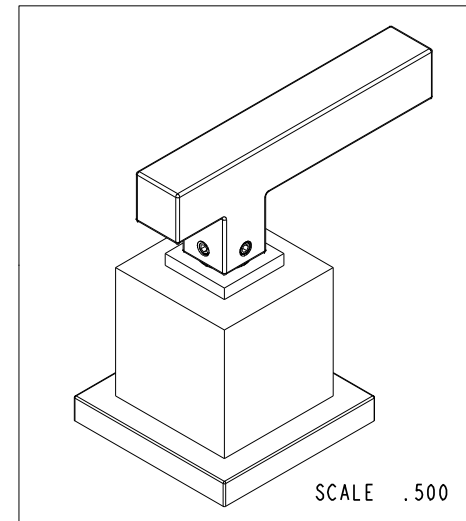
NOTES:

1. TO INSPECT ASSEMBLY, FOLLOW FIRST ARTICLE AND IN PROCESS INSPECTION SHEET.



**BILL OF MATERIAL (CURRENT LEVEL)**

ITEM	PT/ASSY	DESCRIPTION	TYPE	QTY.
1	12261	HANDLE ESCUTCHEON, SQUARE	PART	1
2	2-434	BONNET ASM	ASSEMBLY	1
3	2-123H	HANDLE, SQUARE (HOT)	ASSEMBLY	1
4	10192	HEX KEY TOOL, #8 5/64	PART	1
5	91760	O-RING, #2-036, 50 DURO	PART	1



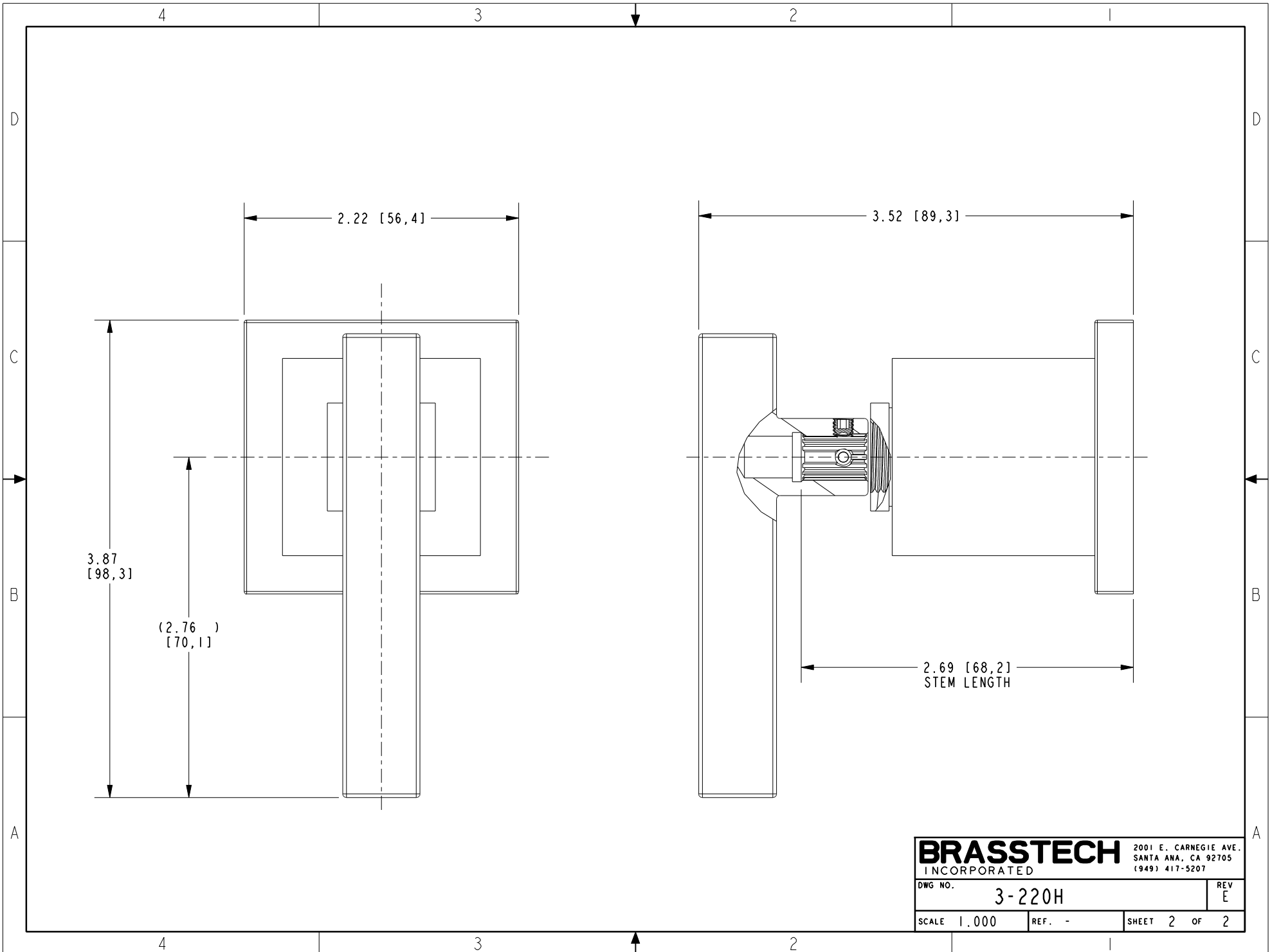
-	E	EN-4300j	12/16/20	R.S.
-	D	EN-3722	02/08/19	C.G.
-	C	EN-2657d	04/10/14	-
-	B	EN-2032	01/10/14	-
-	A	EO-0293	11/20/03	-
-	-	RELEASED	09/27/99	-
ZONE	REV	DESCRIPTION	DATE	APPROVED

COPYRIGHT 2005 BRASSTECH, INC. THESE DRAWINGS AND THE DESIGNS DEPICTED HEREIN ARE THE PROPRIETARY PROPERTY OF BRASSTECH. ANY USE OR REPRODUCTION IS SUBJECT TO THE EXPRESS APPROVAL OF BRASSTECH. UNAUTHORIZED USE IS STRICTLY PROHIBITED. ALL RIGHTS RESERVED.

TESTING	-	-	-
ASSEMBLY	-	-	-
PLATING	-	2020	2020
POLISHING	-	NEXT ASSY	USED ON
MACHINING	-	APPLICATION	
TOOLING FIXTURE #	REMOVE ALL BURRS AND SHARP EDGES		

UNITS ARE: INCHES [MM]		
TOLERANCES ARE:		
FRACTIONS	DECIMALS	ANGLES
±1/16"	.X ±.1 [2.5]	±1°
	.XX ±.06 [1.5]	
(X.XXX) DENOTES CRITICAL DIMS. ALL THREADS ARE CRITICAL		
DRAWN	JIMSON	12/16/20
CHECKED	R.S.	12/16/20
APPROVED	R.S.	12/16/20

<b>BRASSTECH</b>		2001 CARNEGIE AVE. SANTA ANA, CA 92705 (949) 417-5207	
INCORPORATED			
ASSY, HANDLE TRIM, HOT			
DWG NO.		REV	
3-220H		E	
SCALE	REF.	SHEET	OF
.500	-	1	2



<b>BRASSTECH</b>		2001 E. CARNEGIE AVE. SANTA ANA, CA 92705 (949) 417-5207	
DWG NO.	3-220H	REV	E
SCALE	1.000	REF.	-
		SHEET	2 OF 2